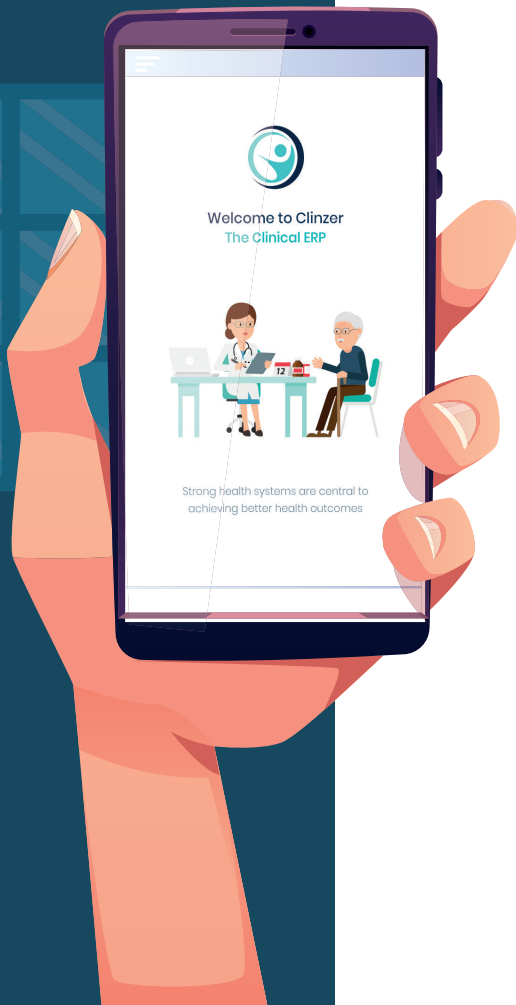




— —

Comprehensive Healthcare Information and Management Solution

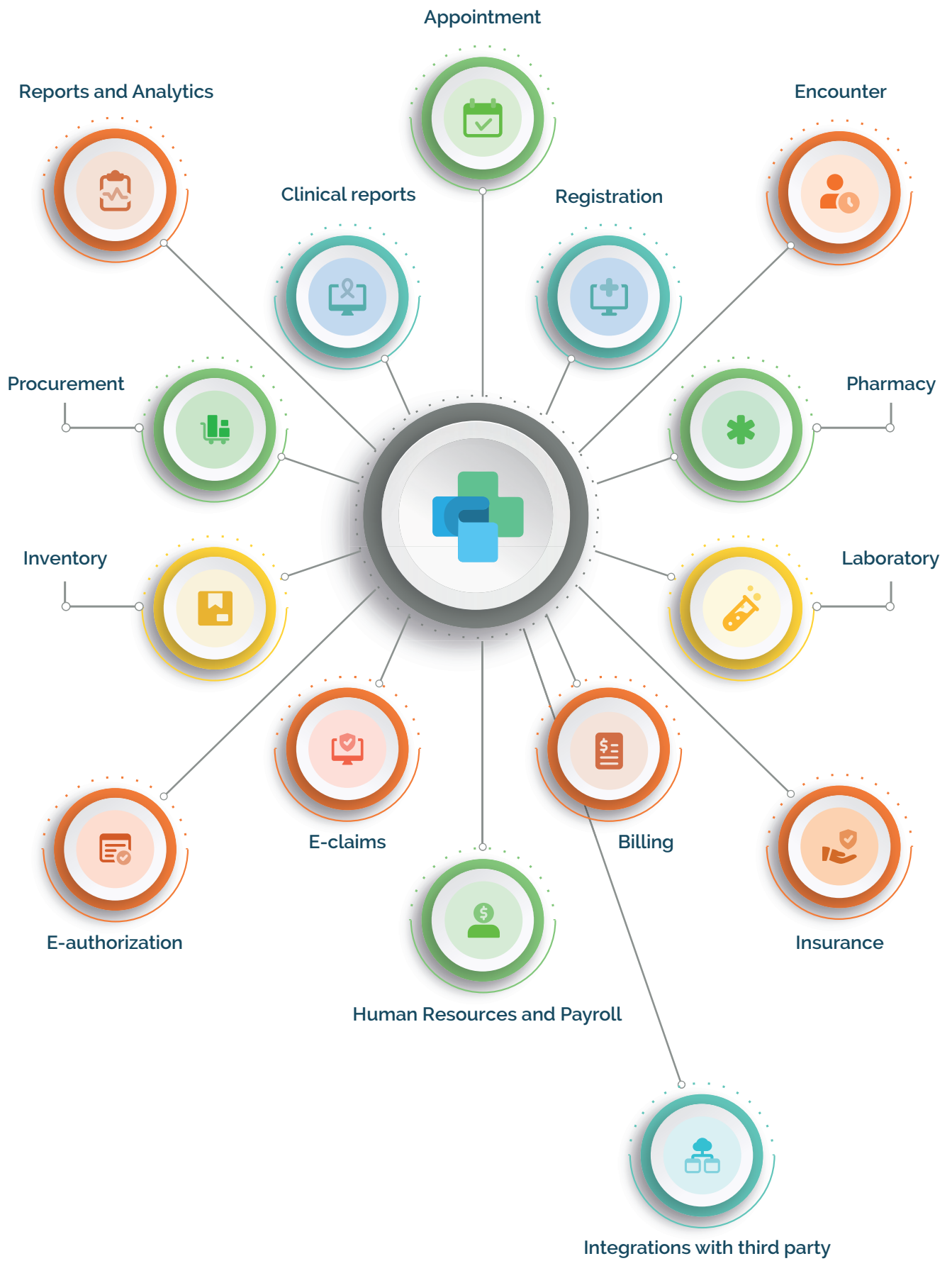


Product of **Abzer DMCC**

www.clinzer.com

Clinzer is an advanced Health Information System designed specifically for healthcare providers to help them use technology to manage their industry best healthcare practices effectively





Our Solution

- ✓ Appointment Scheduling Module
- ✓ Patient Registration Module
- ✓ Billing Module (Cash, Insurance and Corporate)
- ✓ Insurance Management Module
- ✓ Doctors Workbench
- ✓ Nursing workbench
- ✓ Electronic Medical Record (EMR)
- ✓ Laboratory Management Module (LIS)
- ✓ Radiology information system (RIS)
- ✓ Pharmacy Management Module
- ✓ Financial Accounts Management system
- ✓ E- Prescription Module
- ✓ E- Claim management
- ✓ Reports (MIS, Statistics and all kinds of customized reports)
- ✓ E-mail & SMS Integration
- ✓ Inventory/General Stores Management Module
- ✓ HR Management Module (HR System, Leave Management & Payroll)
- ✓ Audit Trials
- ✓ Available as On-Premise and Cloud solutions



Features

Advanced Optimal Scheduling

- Book recurring appointments based on date or day of the month. Online Appointment booking with Mobile App & Patient Portal.
- Appointment scheduler integration with Company website

Advanced Clinical Evaluation & Management

- Dedicated Nursing workbench to record and manage vitals, allergies, EMR, service orders etc.
- Token-based Patient Queue System for an initial assessment to manage bottleneck situations

Revolutionary Mobile Apps – Patient & Doctor

- Dedicated application for Patient to book appointments, access trend charts of vitals and investigation report values.
- Innovative app for Clinicians to support and revert patient queries through secure access
- Notification for Insurance approval status

Laboratory Information Management

- LAB Information management system comes with in-built master list of single, combined test, profiles, reference ranges, test notes, report templates and formats supporting tests that are commonly sent to lab for testing with complete integration across all external operating units and internal departments

Comprehensive Outpatient Management

- National Id Card Scanner/ Biometric Reader/ Document Scanner (Passport/Driving license etc.) integrated to capture and access the medical records

Tele-Medicine/Online Consultation

- Innovative Access to Care – Consult with Doctors anytime and anywhere
- Best Practice potential - Boost Patient volume by reducing overhead expenses, paperwork, and providing personalized care and easy reach to consultation

Cutting-Edge Patient Portal

- Dedicated & secured patient and doctor portal to manage appointments, access reports, medical records, payments detail etc.

Radiology Information System

- Manage registration, scheduling and appointment of radiology services and medical billing issues more easily
- Notification to patients on reports status & release via SMS's/Email
- Notification to patients on reports status & release via SMS's/Email

Features

Comprehensive Revenue Cycle Management

- Robust capture and convert all rendered medical services into revenue
- Proper validation and verification of diagnoses and procedures codes
- Easy tracking and automated notifications for outstanding patient balances, adjustments and collections

Automated Insurance Management

- Automated claim submission process to avoid any delays or missing deadline making it worry-free for organizations
- Real-time track of all credit bills and its corresponding remittance throughout various stages of billing & payment life cycle.
- Dedicated Insurance dashboard addressing various concerns such as approval, trackers, billed, claim & rejection status

Pharmacy Management

- Automated and integrated system to manage drug dispensing, stock management and control functions of a proper pharmacy outlet. Seamless automated workflow to issue the prescriptions from the consulting doctors and reflects automatically into dispensing unit for the respective patient without any manual interface.

Integrated Supply Chain and Finance

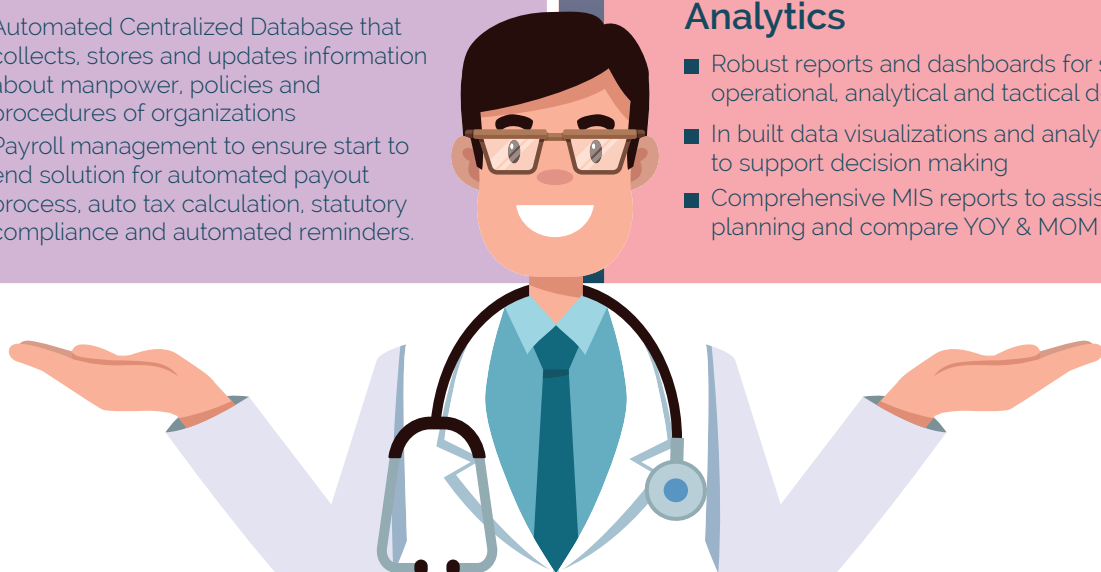
- Comprehensive solution to manage your accounting and inventory functions and interlinks various departments
- Complete financial accounting module with all major Chart of accounts and provision to create and manage various statement .
- SCM module caters to the stock information, purchase and issue of items, dispensing and stock control functions of the items and is closely linked to the Billing Module and In-patient/Out-patient Module

Dynamic HR and Payroll

- Automated Centralized Database that collects, stores and updates information about manpower, policies and procedures of organizations
- Payroll management to ensure start to end solution for automated payout process, auto tax calculation, statutory compliance and automated reminders.

Strategic Reporting and Analytics

- Robust reports and dashboards for strategic, operational, analytical and tactical decisions
- In built data visualizations and analytics tool to support decision making
- Comprehensive MIS reports to assist in budget planning and compare YOY & MOM growth



Other **Advanced Features**



Automate, Secure & Store Health records



Track Every Single Activity and Information



Ensures the Optimal Business Potential and Financial Growth



Go Green Eco-Friendly ERP Solution



Uniform and Scalable Centralized Database



Bi-Directional Machines Integration



Contactless Payment Solutions



Compliant with Worldwide Healthcare Regulations and Standards



Built-in BI tools



Referral clinics/referral doctors management





Abzer DMCC

Jumeirah Lake Towers,
Dubai United Arab Emirates – 337677

☎ 971 42 42 9200

sales@abzer.com